

Switch Replacement Procedure



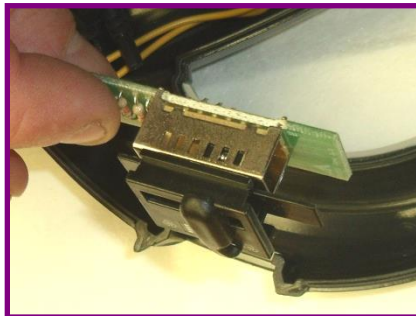
Picture 1



Picture 2



Picture 3



Picture 4.



Picture 5

1. Place Hose handle on flat surface
2. Remove 8 No. screws from Hose Handle (*see pic 1*)
3. Lift off top section of Hose Handle (*see pic. 2*)
4. Carefully remove switch arrangement (*see pic. 3*)
5. Insert new switch arrangement (*see pic. 4*)
6. Re-fit top section of Hose Handle
7. Re-secure Hose Handle with 8 No. screws (*see pic. 5*)
8. Insert Hose into wall and test

Should you require additional assistance, please do not hesitate to contact us by calling on **028 7963 2424** or email info@beamcentralsystems.com