

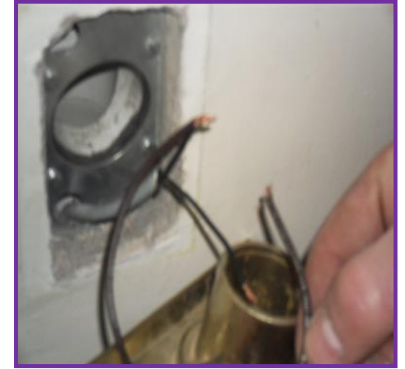
## Central Vacuum Inlet Replacement Procedure



1. Switch main power unit supply off



2. Unscrew old inlet from wall



3. Remove old inlet from the wall



4. Clean around the wall port



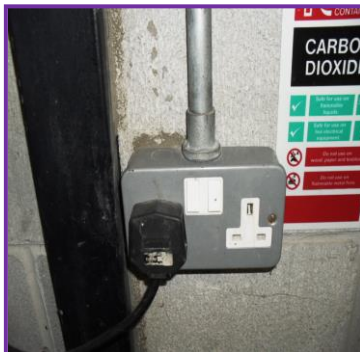
5. Reattach LV cables from old inlet



6. Position inlet into port and secure loosely with screws



7. Plumb inlet, tighten screws and fit inlet trim



8. Switch main power unit supply on



9. Test the inlet is working correctly and ensure no leaks

Should problems persist with your inlet, please do not hesitate to contact us by calling +44(0)28 7963 2424 or email [info@beamcentralsystems.com](mailto:info@beamcentralsystems.com)